



GLASS INDUSTRY

CERBERITE[®]
COST EFFECTIVE
SOLUTIONS FOR HOT
GLASS HANDLING



01

CERBERITE®

YOUR COST KILLER IN A HARSH ENVIRONMENT

Looking for production efficiency
and lower operating costs?

Million hours of operation

Our know-how has been built over decades through a continuous cooperation between our customers and our R&D center. Cerberite® is the global leading brand representing the specific solutions out of graphite, composite and metallic systems for the glass industry.



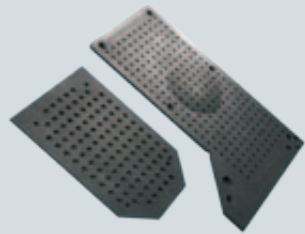
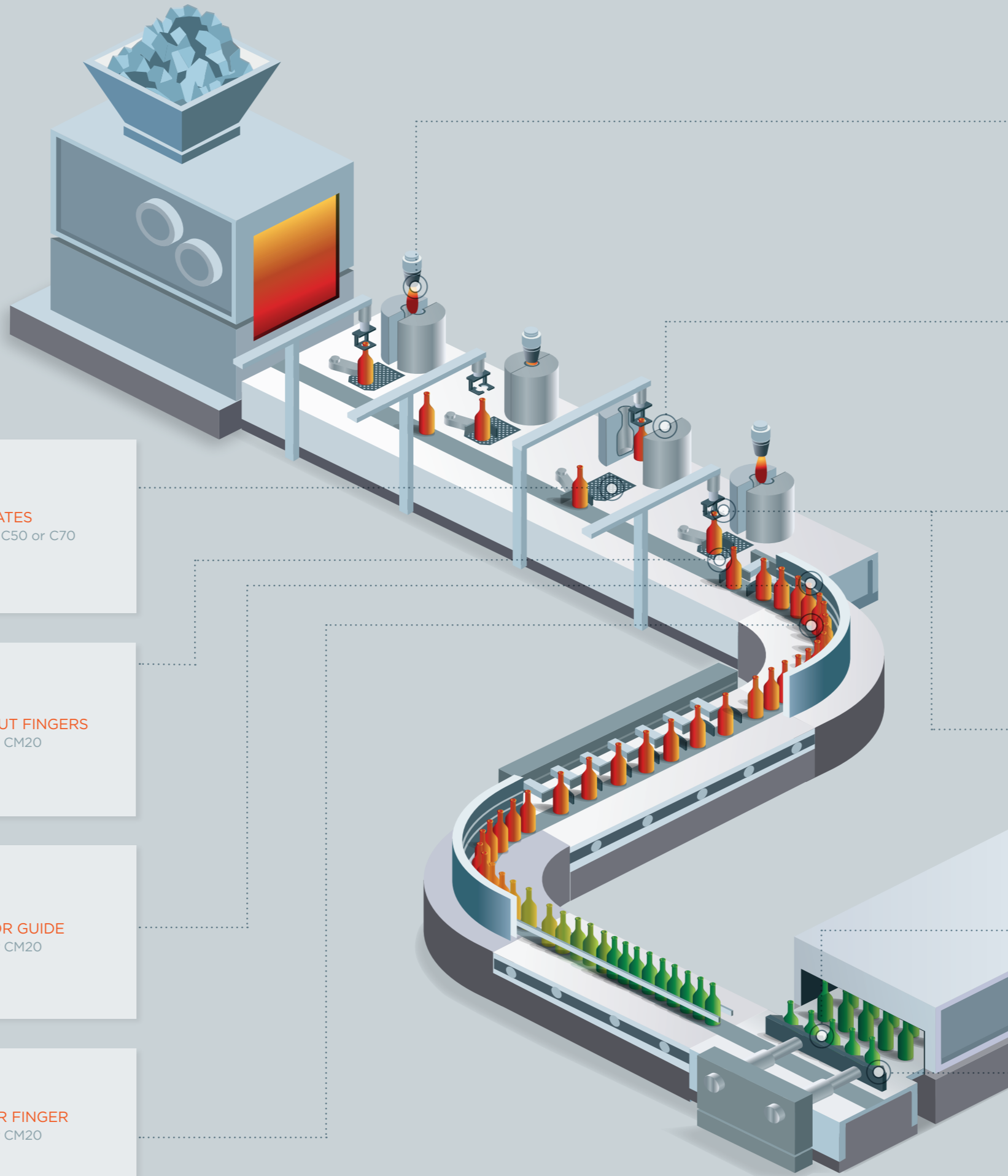
Low thermal conductivity	<p>WHY IS IT KEY FOR YOU?</p> <ul style="list-style-type: none"> • Reduces or avoids checks and crizzles • Reduces thermal shock 	<p>YOUR BENEFITS</p> <ul style="list-style-type: none"> • Fewer rejects • Higher productivity • Improves “melt-to-pack” ratio
Excellent flexural and compressive strengths	<p>WHY IS IT KEY FOR YOU?</p> <ul style="list-style-type: none"> • Improves wear performance • High impact resistance • Handling parts last longer 	<p>YOUR BENEFITS</p> <ul style="list-style-type: none"> • Longer life for contact parts • Fewer unplanned maintenance stops • Higher productivity / lower operation costs
Low porosity	<p>WHY IS IT KEY FOR YOU?</p> <ul style="list-style-type: none"> • Reduces contacts checks • Reduces absorption of contamination 	<p>YOUR BENEFITS</p> <ul style="list-style-type: none"> • Fewer rejects • Higher productivity / operating cost reduction
Anti-oxidation treatment (C50 and C70)	<p>WHY IS IT KEY FOR YOU?</p> <ul style="list-style-type: none"> • Extends life of material • Improves wear properties 	<p>YOUR BENEFITS</p> <ul style="list-style-type: none"> • Fewer insert changes • Reduces unplanned maintenance stops • Higher productivity

GRADE	POROSITY %	FLEXURAL STRENGTH MPa	COMPRESSIVE STRENGTH MPa	THERMAL CONDUCTIVITY W/m ² C	MATERIAL	OXIDATION RESISTANCE*
C1	3	65	121	1	Moulded Composite	
C5	12	55	195	5	Isomoulded Carbon	
C6	12	90	240	4	Isomoulded Carbon	
C8	16	58	165	18	Isomoulded Carbon	
C15	9	45	98	85	Isomoulded Graphite	
C25	8	50	108	106	Isomoulded Graphite	
C50	8	55	119	106	Isomoulded Graphite	✓
C55	7	65	134	105	Isomoulded Graphite	
C65	7	76	154	102	Isomoulded Graphite	
C70	8	77	215	80	Isomoulded Graphite	✓
CM20	15	100	145	16	Carbon-Carbon Composite	
CM80	15	110	145	16	Carbon-Carbon Composite	✓

* anti-oxidation treatment

02

GLASS PROCESS PRODUCT SOLUTIONS



DEAD-PLATES
Grade C25, C50 or C70



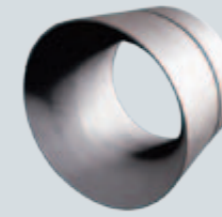
SWEEP-OUT FINGERS
Grade C1 or CM20



CONVEYOR GUIDE
Grade C1 or CM20



TRANSFER FINGER
Grade C1 or CM20



GUIDE GOB
C15 or C25



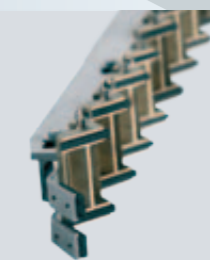
TOP PLATE + INSERTS
C50



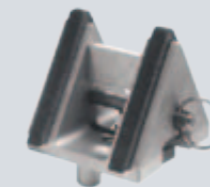
**TAKE-OUT TONGS
WITH INSERTS**
Short runs C25
Long runs C50 or C70



**ROUND STYLE TAKE-OUT
TONGS WITH INSERTS**
Grade short runs C25
Long runs C50 or C70



**UNIVERSAL FITTING
STACKER BAR WITH
SPACER INSULATORS**
Grade CM20 or CM80



**STACKER BAR BLOCK
WITH INSULATORS**
Grade CM20 or CM80

03

RIGHT MATERIAL & REACTIVITY YOUR PERFORMANCE

Mersen has developed an extensive global network to be able to serve our customers wherever they are, with the quality that they can expect for a market leader.

+ Mersen machine shop close to your plant



QUICK DELIVERIES

we have the material on stock. You save time.



EASY

your local contact at Mersen speaks the same language as you.



EFFICIENCY

Mersen also does the machining of your spares based on your requirement. It's direct, no third parties and who else better than Mersen knows how to machine our material?

04

PRESENT
IN35
COUNTRIES

CERBERITE®

SOLUTIONS FOR THE GLASS CONTAINER MANUFACTURING PROCESS

	C1	C15	C25	C50	C55	C65	C70	CM20	CM80
TUBE DRIVE				✓					
LOADING FUNNEL		✓							
GOB DEFLECTOR			✓	✓					✓
TOP PLATE INSERTS				✓					
BLOW-HEAD DISCS			✓	✓					
TAKE-OUT TONG	✓		✓	✓	✓	✓	✓		
DEAD-PLATE			✓	✓			✓		
DEAD-PLATE GUIDE	✓								
SWEEP-OUT	✓							✓	
CONVEYOR GUIDE	✓							✓	
TRANSFER MECHANISM	✓	✓						✓	
HANGING GUIDE	✓		✓						
LEHR STACKER BAR								✓	✓

This table represents standard recommendations made by our experts for the glass container manufacturing process. This does not prevent an analysis of your specific process by our technicians to propose the right solutions for you



GLOBAL EXPERT IN ELECTRICAL
POWER AND ADVANCED MATERIALS

EUROPE

FRANCE

Mersen France Gennevilliers S.A.S
BP148 - 41 rue Jean-Jaurès
F-92231 Gennevilliers
tel. : +33 (0)1 41 85 45 87

GREAT BRITAIN

Mersen UK Portslade Ltd
Boltby Way
Durham Lane Industrial Park
Eaglescliffe
Stockton on Tees
TS16 0RH
tel: +44 (0)1642 790100

GERMANY

Mersen Deutschland Suhl GmbH
Dröhbergstr. 1,
98527 SUHL
Germany
tel. : +49 03681-35320-0

NETHERLANDS

Mersen Benelux B.V.
Mercuriusweg 4-6
3113 AR (SCHIEDAM)
Netherlands
tel. : +311 0298 3030

ASIA

CHINA

Mersen Chongqing Co., Ltd
No. 2 Yunsong Road, Economic Development Park,
North New District
401122 Chongqing
P.R. of China
tel. : +86-236-730-8668

CHINA

Mersen Kunshan Co., Ltd
Eastside of Taihu Rd.
Kunshan Development Zone
Kunshan 215334
Jiangsu Province
P.R. of China
tel. : +86-400-162-8288

KOREA

Mersen Korea Co., Ltd. -
Ssangam Branch
2001-1, Ssangam-ri,
336-865 SSANG-AM
Eumbong-myeon, Asan,
Chungnam, Korea
tel. : + 82-41-547-0135-6

NORTH AMERICA

USA

Mersen USA St Marys-PA Corp
215 Stackpole Street
St Marys PA 15857 - USA
tel. : +1 814 781 1234

USA

Mersen USA Greenville-MI Corp
712 Industrial Park, Po Box 637
MI 48838 Greenville - USA
tel. : +1 616 754 5671

SOUTH-AMERICA

BRAZIL

Mersen do Brasil, Ltda.
Av. Jabaquara, 3060 - 5 andar- Cj. 502.
Bairro Mirandópolis - São Paulo - SP
CEP: 04046-500
tel. : +55 11 2348-2360

MEXICO

Mersen México Monterrey, S. de R.L. de C.V.
Temis No. 703,
Col. Arboledas de Santa Cruz
Guadalupe. N.L., Mexico
C.P. 67196
tel. : +52 81 81272800

MERSEN LOCAL GLASS
HANDLING EXPERTS
ALSO IN OUR SITES IN:

SOUTH-AMERICA:

Colombia, Argentina, Chile

EMEA:

Spain, Italy, Turkey,
Switzerland, South-Africa

ASIA:

Thailand, India, Australia

WWW.MERSEN.COM

CERBERITE@MERSEN.COM

